

Executive Summary

The Up on the Downs Landscape Partnership Scheme (UOTD) area hosts some of the most instantly recognisable landscapes in Britain including the iconic White Cliffs of Dover. The scheme area's interior includes quintessential and distinctive chalk landscapes with a wealth of built and archaeological heritage and a richness of wildlife unmatched by many parts of Britain.

However, very few people realise that this is a landscape under threat: often poorly managed and not understood in an area of significant social and economic decline. This lack of understanding, changes in agriculture, the legacy of deprivation and the pressure of development are all threats to this landscape.

Through extensive consultation with local communities and organisations a narrative for this landscape emerged, leading to an agreed set of priorities for its conservation and long-term care.

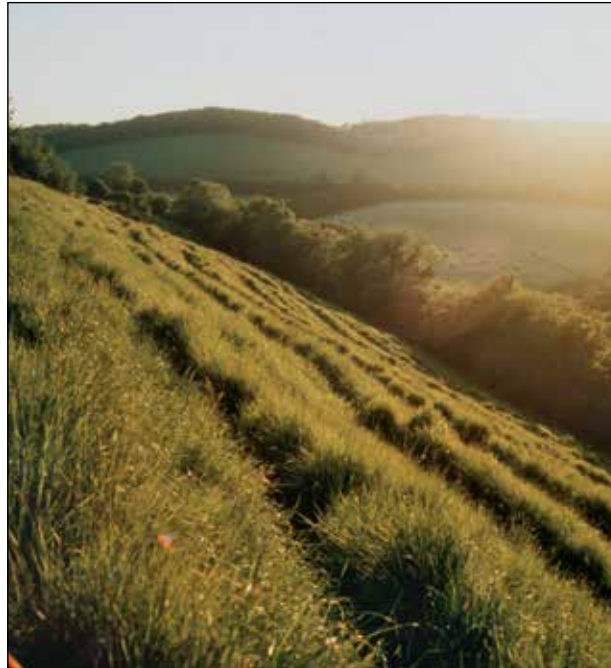


Photo: Dan Tuson

Downland near Lydden

Principal among these are conserving and restoring the chalk downland landscape and its cultural heritage for the future; and increasing access to, and understanding and enjoyment of, its historic origins and importance as a heritage asset.

The Up on the Downs Landscape Partnership Scheme will work with local communities to deliver a programme of action that will achieve these priorities. The scheme will encourage local communities to participate in caring for and celebrating the landscape and its heritage, helping them to make decisions about it and providing them with the skills to contribute to its long-term care.

The momentum and enthusiasm generated by the scheme will provide a legacy for the Up on the Downs Landscape Partnership and ensure that the benefits are sustained into the future for all.



Figure 1: Up on the Downs Landscape Partnership Scheme area